

FOR LEASE

FLETCHER HILLS OFFICE SPACE

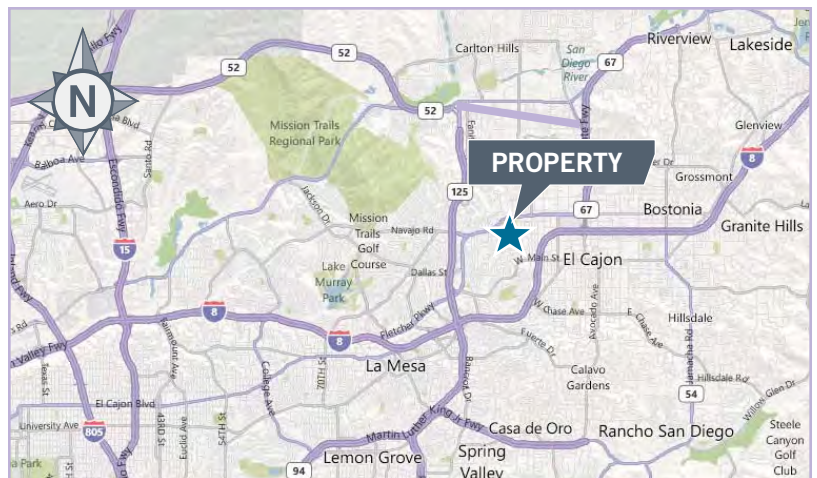
1,704-2,368 SF

2295 Fletcher Parkway, El Cajon, CA 92020



BUILDING AMENITIES

- Location, location, location
- Ground floor office suite, large reception/conference area, in-space restroom, kitchen, direct outside access to office suite
- Quality built-in medical cabinetry (unplumbed, built by Children's Hospital)
- Near 125 on/of ramps
- 5 minutes to Highway 52 and I-8
- Lease rate: \$1.30/SF gross + utilities



**Cassidy
Turley** Commercial
Real Estate Services

For more information, please contact:

Kerry Schimpf
619.462.3100
kerry.schimpf@cassidyurley.com
CA Lic. 00955075

Ken Ruppert
619.442.8000
ken@eastcountyproperties.com
CA Lic. 00814925

EAST COUNTY
PROPERTIES

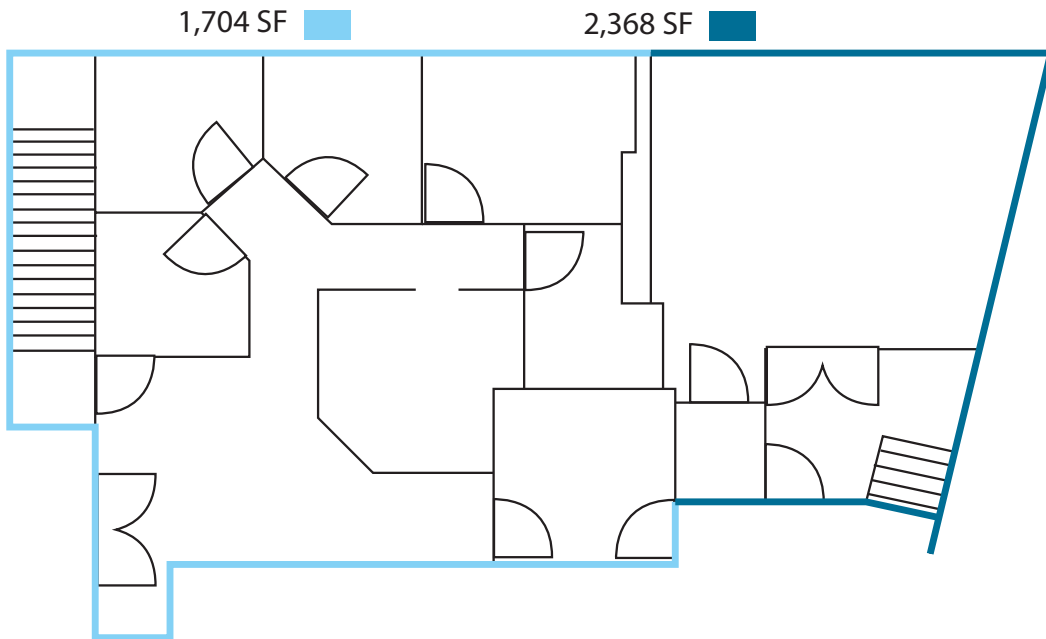
Cassidy Turley San Diego 2295 Fletcher Parkway, Suite 200, El Cajon, CA 92020 P 619.462.4500 F 619.462.7100 cassidyurley.com/sandiego

The information contained herein has been given to us by the owner of the property or other sources we deem reliable. We have no reason to doubt its accuracy, but we do not guarantee it. All information should be verified prior to purchase or lease.

FOR LEASE

2295 Fletcher Parkway, El Cajon, CA 92020

LOCATION AERIAL & FLOOR PLAN



filepath:K\Fletcher Parkway 2295/Brochure/Fletcher Parkway 2295.indd

**Cassidy
Turley** Commercial
Real Estate Services

For more information, please contact:

Kerry Schimpf
619.462.3100
kerry.schimpf@cassidyurley.com
CA Lic. 00955075

Ken Ruppert
619.442.8000
ken@eastcountyproperties.com
CA Lic. 00814925

EAST COUNTY
PROPERTIES

Cassidy Turley San Diego 2295 Fletcher Parkway, Suite 200, El Cajon, CA 92020 P 619.462.4500 F 619.462.7100 cassidyurley.com/sandiego

The information contained herein has been given to us by the owner of the property or other sources we deem reliable. We have no reason to doubt its accuracy, but we do not guarantee it. All information should be verified prior to purchase or lease.